

SCHOOL DISTRICT OF



FORT • ATKINSON

FAC Meeting No. 5 | 28 January 2020



CGSCHMIDT

pra

PLUNKETT RAYSICH
ARCHITECTS, LLP

call to order

Questions



SCHOOL DISTRICT OF



FORT • ATKINSON

AGENDA

Tuesday, January 28, 2020

Tuesday, January 28, 2020

Meeting 5 (January 28, 2020): Preliminary Options Review

1. Call to Order – Co-Chairs
 - a. Review of Agenda and Upcoming Meetings
 - b. Questions from Previous Meeting
2. School Tours Schedule – PRA / SDFA
3. Review of “Learn” Phase – PRA / CGS
4. Group Discussion: Prioritization of Needs – SDFA / PRA / CGS
5. Review of Starter Options – PRA
6. Tour Rockwell Elementary – ALL

NEXT MEETING: February 25, 2020 @ Purdy Elementary



school tours

discussion



SCHOOL DISTRICT OF



FORT • ATKINSON

review of “learn” phase



SCHOOL DISTRICT OF



FORT • ATKINSON

existing conditions

analysis

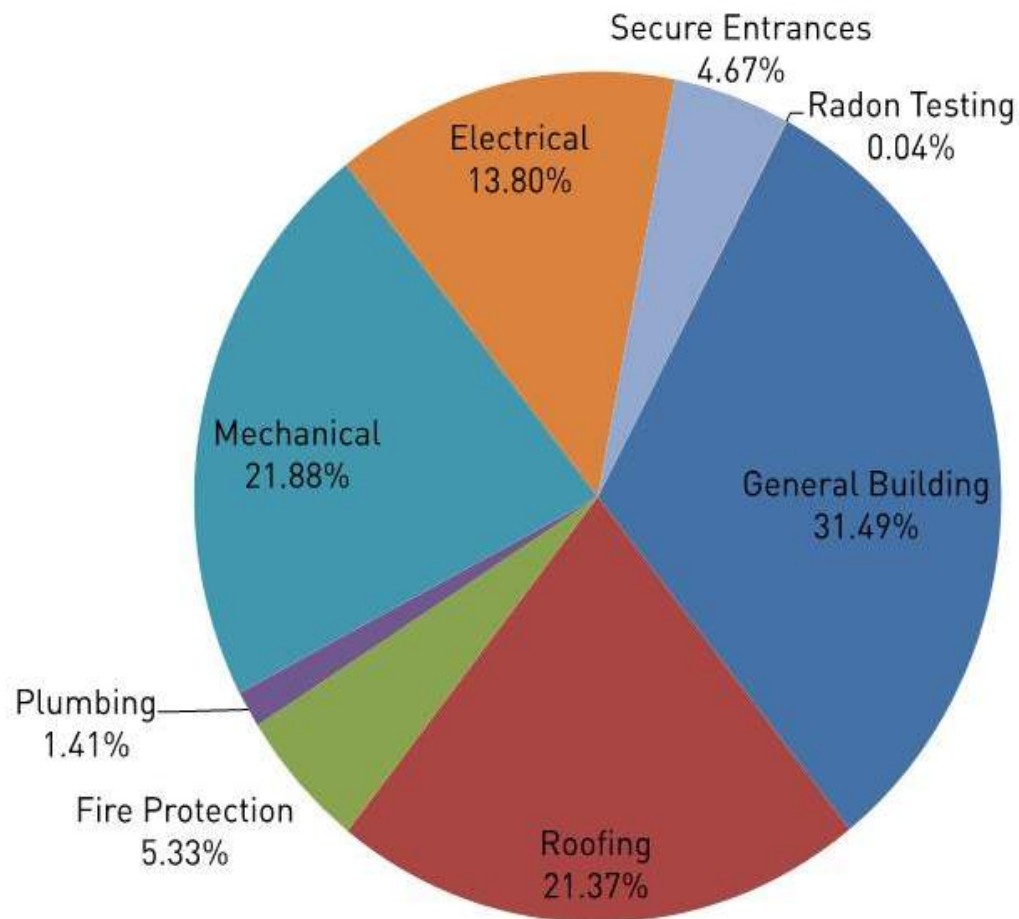
SCHOOL DISTRICT OF



FORT • ATKINSON

Summary of Maintenance Needs for All Buildings

BUILDING	URGENT	NEEDED 2-5 YEARS	NEEDED 6-10 YEARS	NEEDED 10+ YEARS	SECURE ENTRANCES	RADON TESTING	SUBTOTAL
District Office	NA	NA	NA	NA	\$17,873	NA	\$17,873
Barrie Elementary	\$259,900	\$1,712,640	\$916,920	\$859,000	\$242,843	\$2,510	\$3,993,813
Luther Elementary	\$1,392,950	\$3,464,177	\$1,296,100	\$79,000	\$70,868	\$3,220	\$6,306,315
Purdy Elementary	\$237,000	\$2,432,918	\$2,656,072	\$633,000	\$601,996	\$3,220	\$6,564,206
Rockwell Elementary	\$427,150	\$1,764,582	\$1,012,116	\$263,000	\$270,345	\$2,510	\$3,739,703
Middle School	\$1,618,400	\$2,838,216	\$4,717,775	\$1,524,000	\$579,284	\$2,400	\$11,280,075
High School	\$233,100	\$2,880,133	\$1,574,874	\$3,792,185	\$106,984	\$4,150	\$8,591,425
Totals:	\$4,168,500	\$15,092,666	\$12,173,856	\$7,150,185	\$1,890,193	\$18,010	\$40,493,409



ALL DISTRICT FACILITIES

General Building	\$12,751,000
Roofing	\$8,655,200
Fire Protection	\$2,159,285
Plumbing	\$572,512
Mechanical	\$8,858,822
Electrical	\$5,588,388
Secure Entrances	\$1,890,193
Radon Testing	\$18,010

Total: \$40,493,409

educational space --- analysis

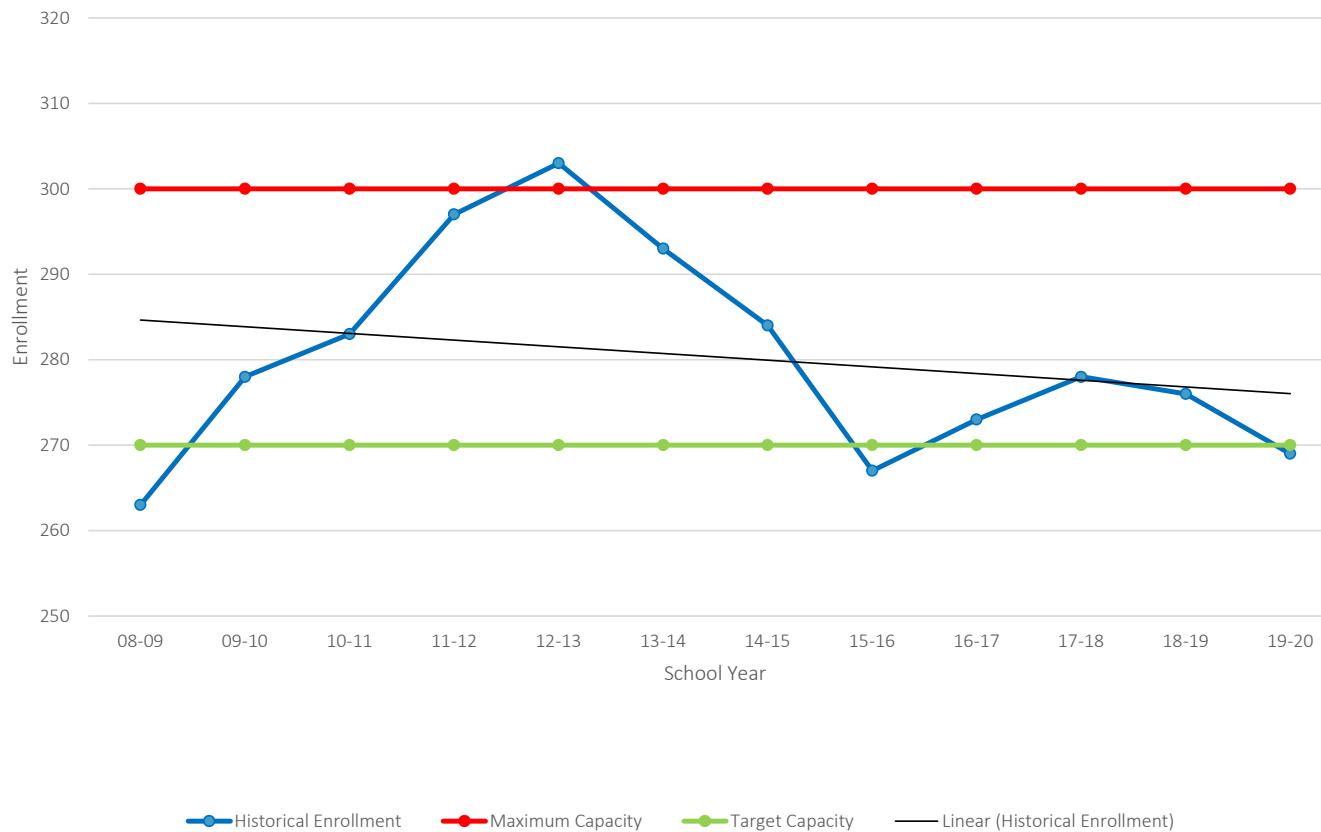
SCHOOL DISTRICT OF



FORT • ATKINSON

Barrie Elementary

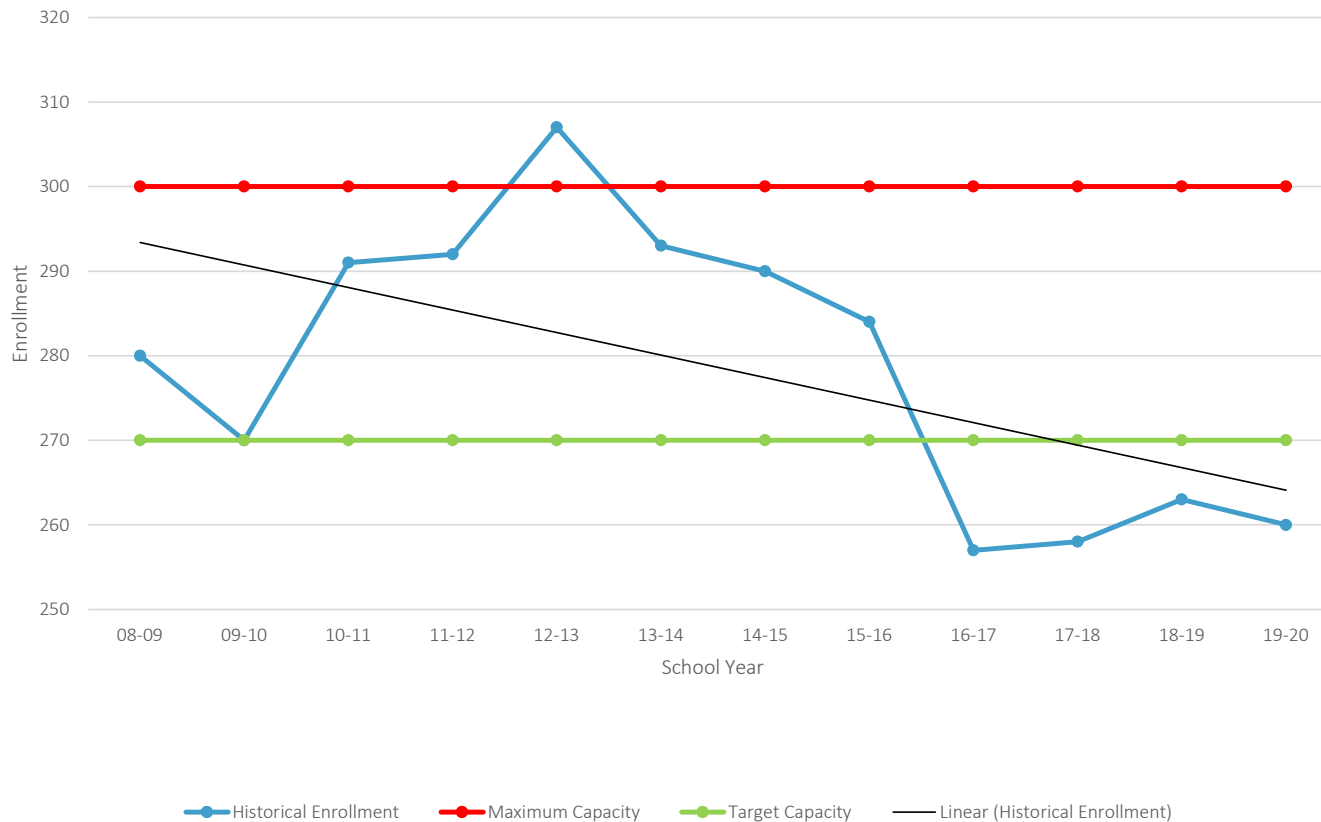
Barrie Elementary School Enrollment History



- Max Capacity
~ 300
- Target Capacity
~ 270
- 19/20 Enrollment
= 269
- 2 Section School

Luther Elementary

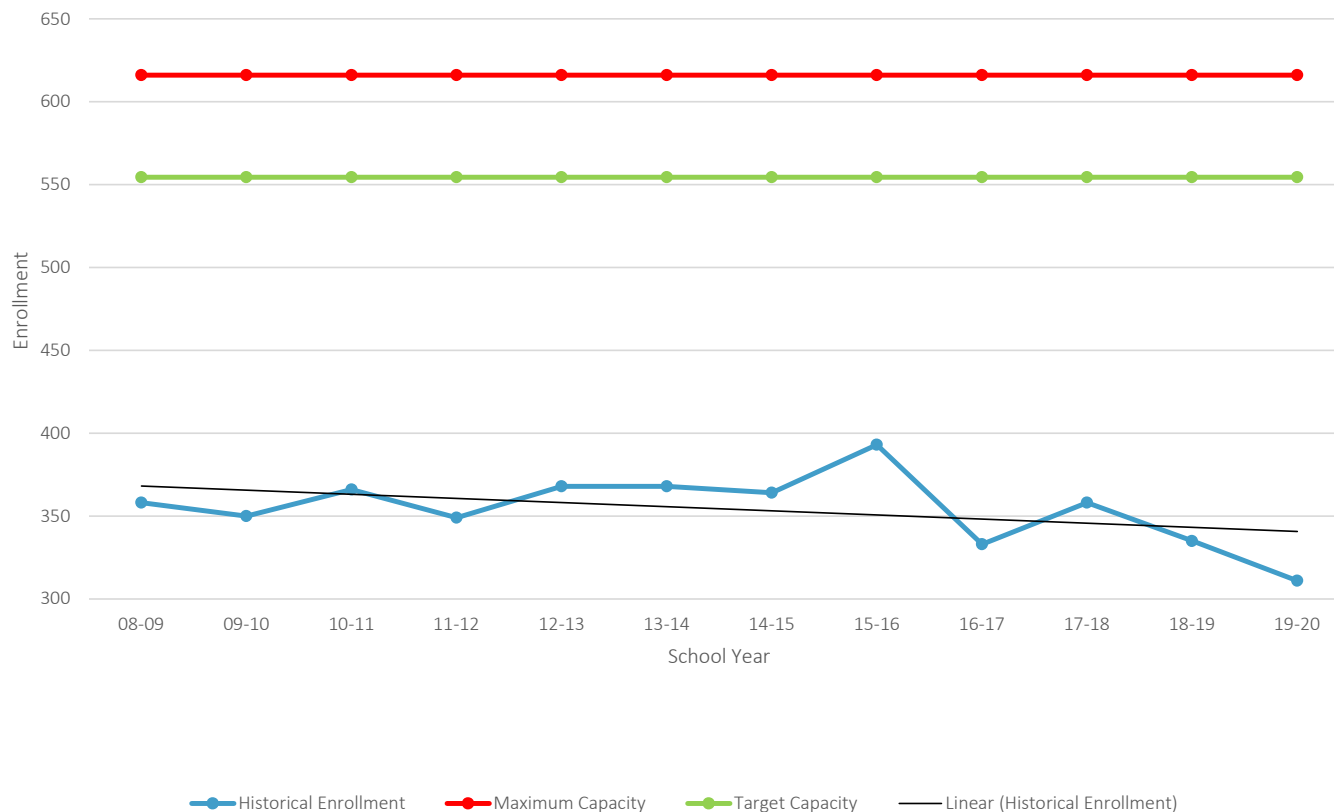
Luther Elementary School Enrollment History



- Max Capacity
~ 300
- Target Capacity
~ 270
- 19/20 Enrollment
= 260
- 2 Section School

Purdy Elementary

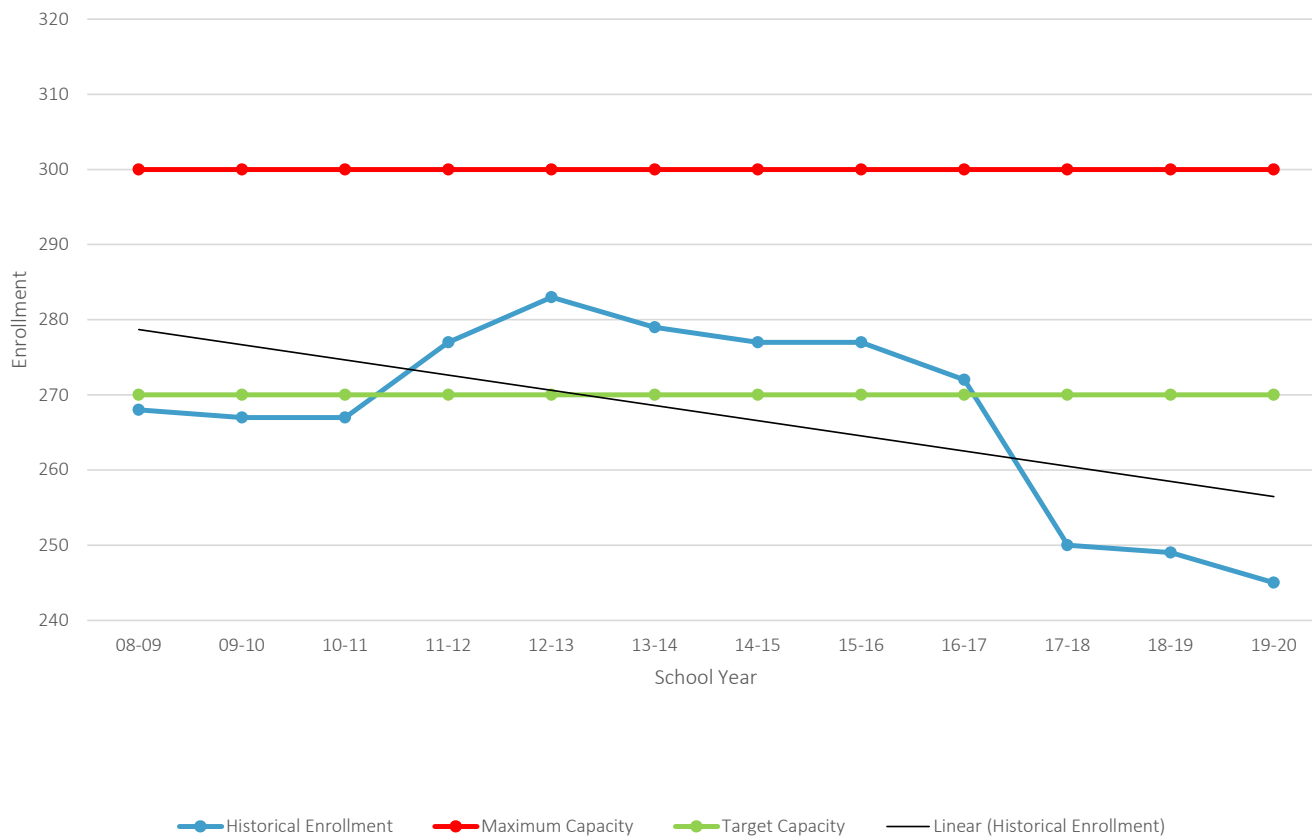
Purdy Elementary School Enrollment History



- Max Capacity
~ 616
- Target Capacity
~ 554
- 19/20 Enrollment
= 311
- 2 Section School
- Multiple potential
open classrooms

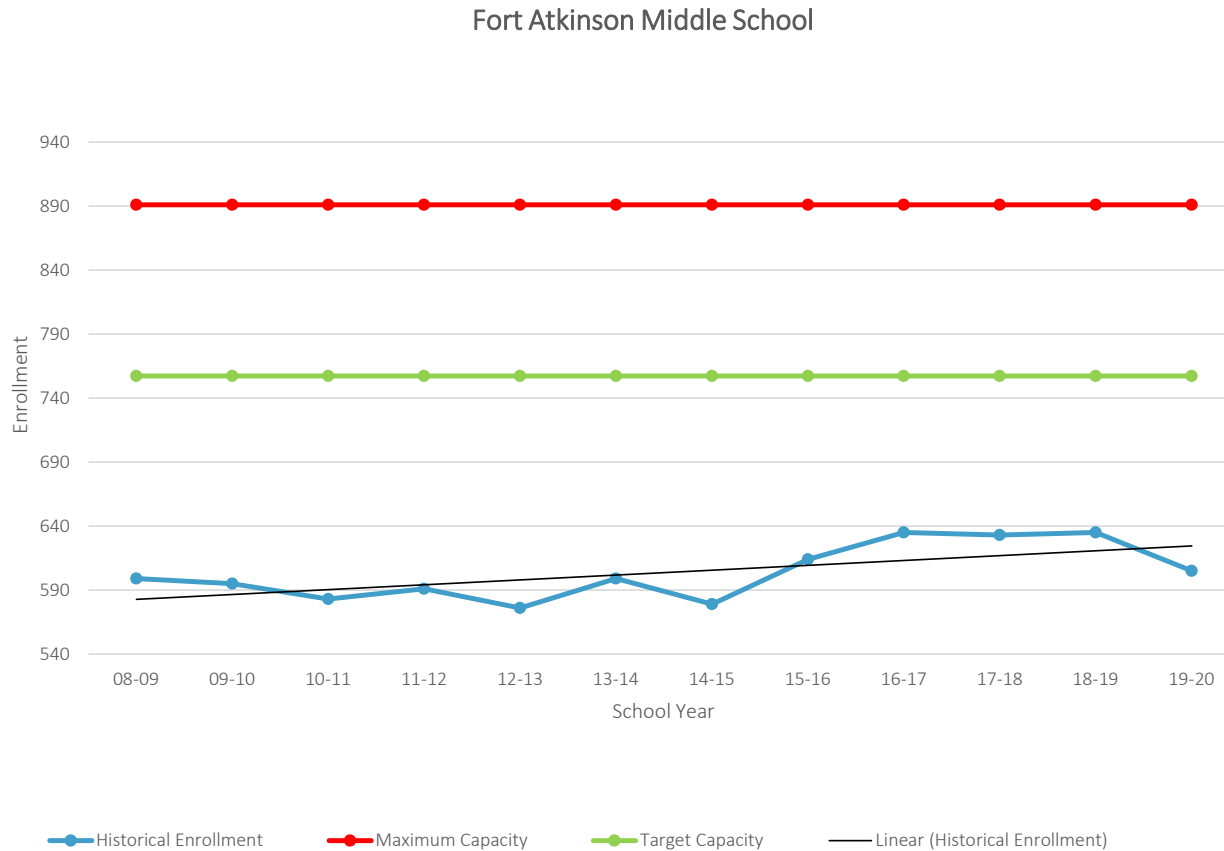
Rockwell Elementary

Rockwell Elementary School Enrollment History



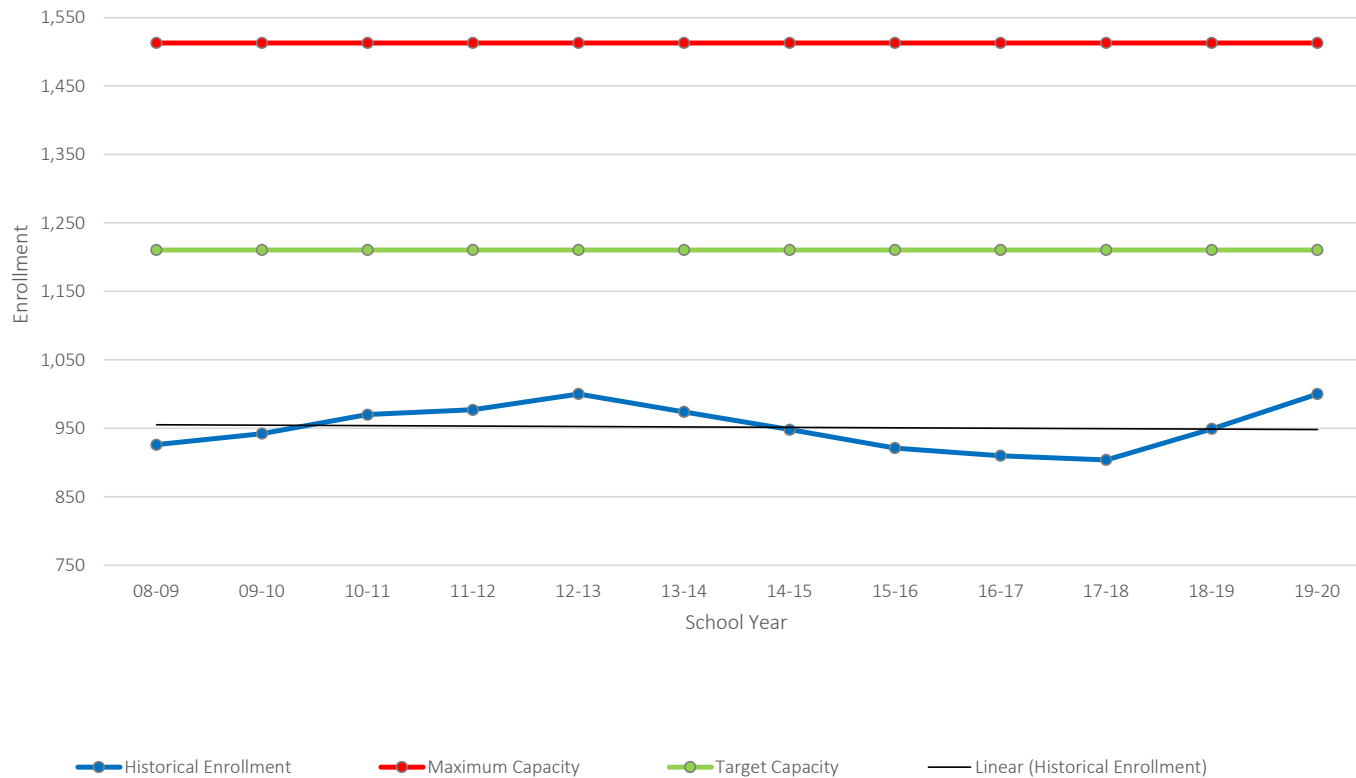
- Max Capacity ~ 300
- Target Capacity ~ 270
- 19/20 Enrollment = 245
- 2 Section School

Fort Atkinson Middle School



- Max Capacity
~ 891
- Target Capacity
~ 757
- 19/20 Enrollment
= 605
- Potential added
capacity w/ space
reassignment

Fort Atkinson High School



- Target Capacity
~ 1,211
- Max Capacity
~ 1,513
- 19/20 Enrollment
= 1,000

collaborative learning --- spaces

SCHOOL DISTRICT OF



FORT • ATKINSON

student-centered learning

Various Settings and Context

- Different places for learning
- Self learning vs. organized learning
- Multiple learning styles
- Flipped classroom



Facilities Advisory Committee

transforming the learning environment

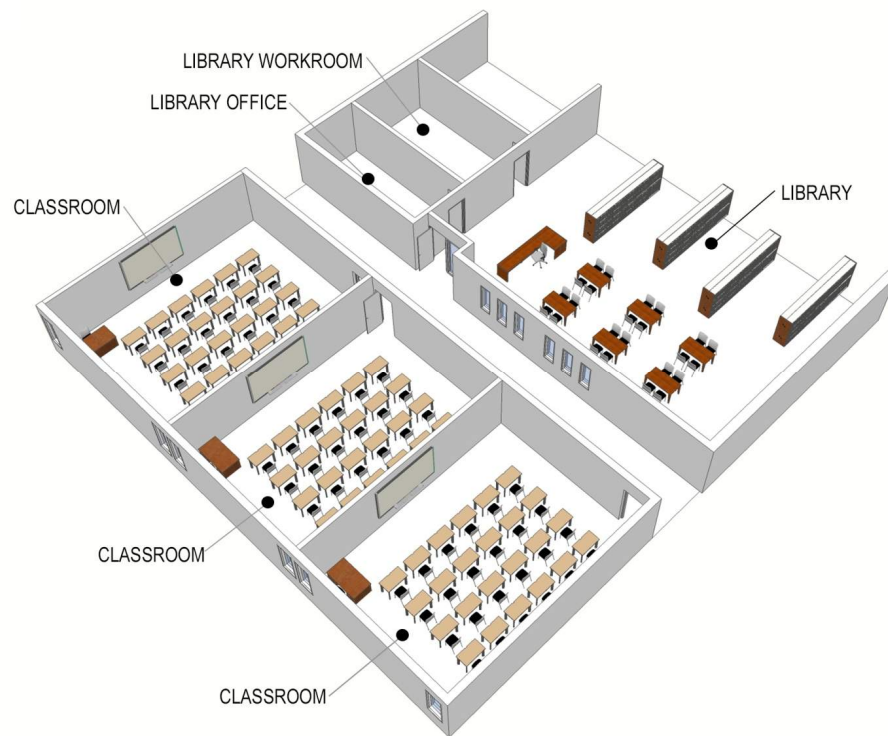
Learning Environment Goals

- Size would be 900 to 1,200 sq. ft. as compared to 800 to 900 sq. ft.
- Flexible furniture
- Designed with large group, small group and individual study spaces
- Project-based learning would be supported
- Variety of learning environments
- Increased transparency between spaces
- Access to outdoors

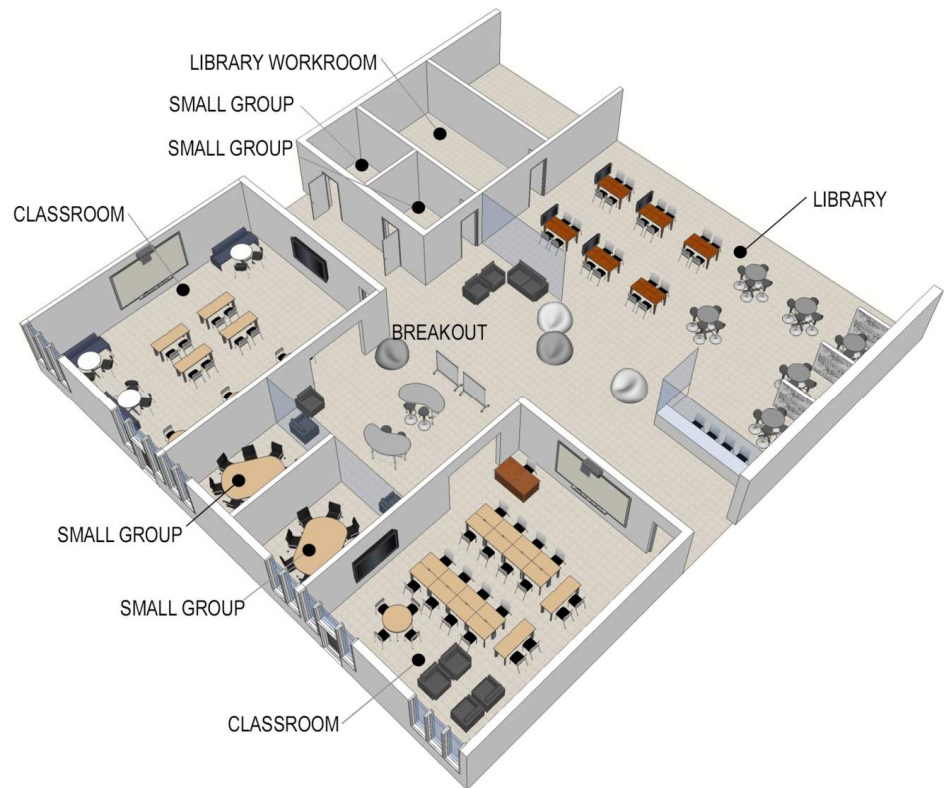


transforming the learning environment

Current Space Configuration

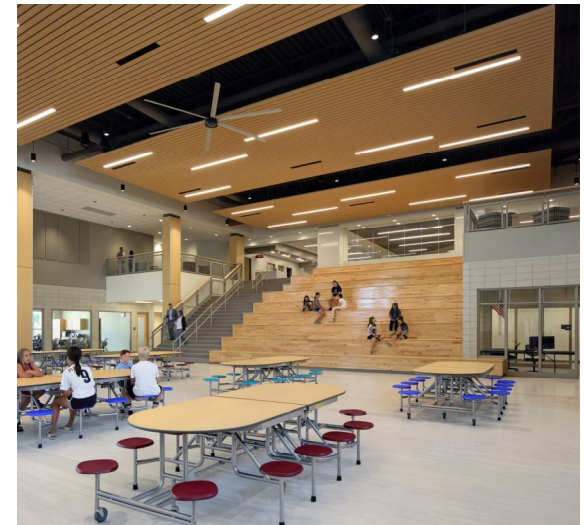


Reconfigured Space



modern learning environments

Student Commons



Facilities Advisory Committee

modern learning environments

Collaboration Spaces



Facilities Advisory Committee

modern learning environments

IMC / Learning Commons



Facilities Advisory Committee

modern learning environments

Next Generation Tech Ed



Facilities Advisory Committee

modern learning environments

STEM Labs



Facilities Advisory Committee

school finance

overview

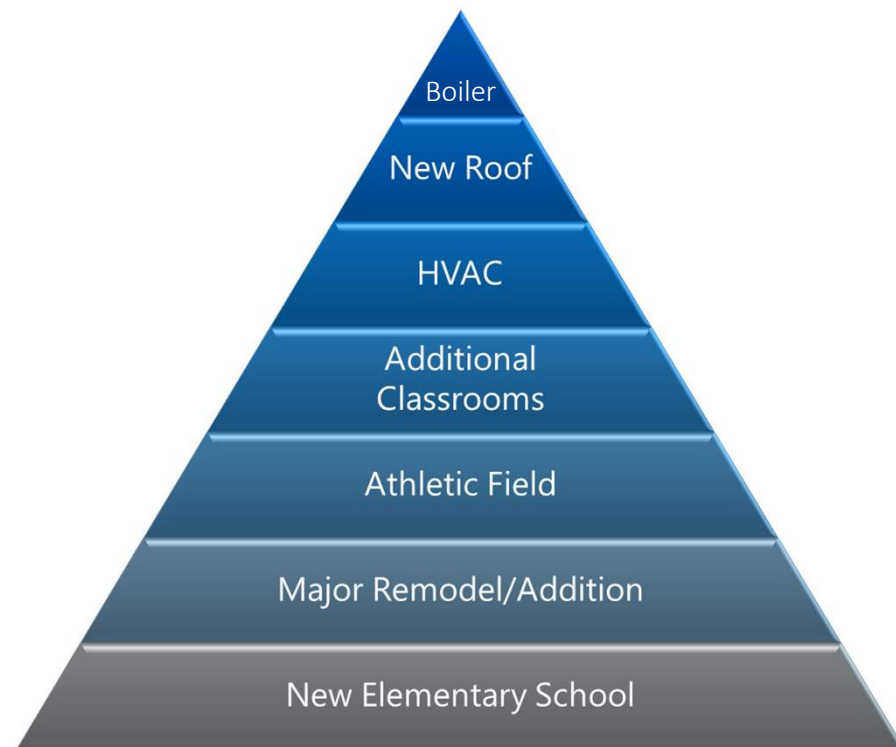
SCHOOL DISTRICT OF



FORT • ATKINSON

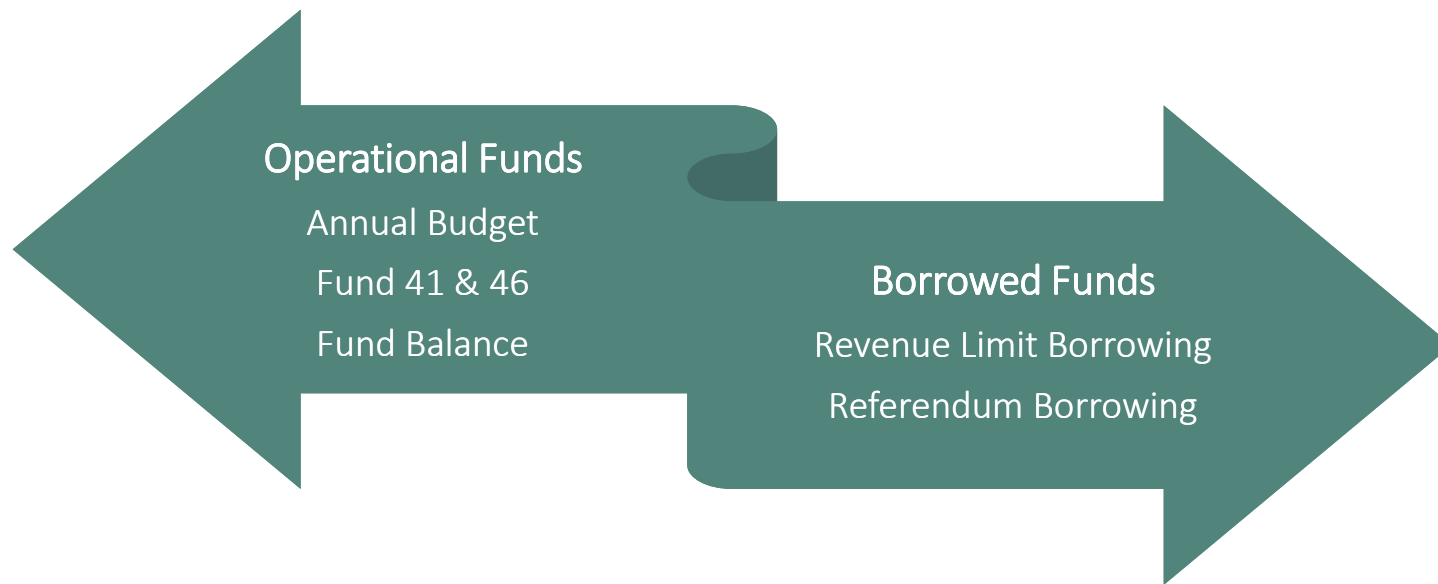
What Are Your Facility Priorities?

- Maintenance Projects
 - Smaller dollar cost
 - Often paid with operational funds
 - Carpet, painting, minor plumbing repair, lighting replacement (bulbs)
- Capital Project
 - Larger dollar cost
 - Longer useful life
 - Typically paid for with debt proceeds
 - Authority Needed
 - **Referendum**
 - Budget \$ pays debt



We Know What We Need... Funding!

BAIRD



We Know What We Need... Funding!

BAIRD

Operating Budget

- Competes for revenue limit dollars

Non-Referendum Debt

- Competes for revenue limit dollars

Referendum – Operational/Debt

- New source of funds

prioritization of needs

Time for feedback!



SCHOOL DISTRICT OF



FORT • ATKINSON

prioritization of needs

1-2-4-ALL

Thought Topic: Top Three Issues You Want to Prioritize

SCHOOL DISTRICT OF



FORT • ATKINSON

Facilities Advisory Committee

preliminary options review



SCHOOL DISTRICT OF



FORT • ATKINSON

Options Review

Option 1 – Maintenance Only

- Address category 1, 2 & 3 maintenance items at all buildings
- Renovations as needed to provide secure entry sequences at each school

SCHOOL DISTRICT OF



FORT • ATKINSON

Facilities Advisory Committee

Options Review

Option 2 – Renovate / Expand Luther as Middle School

- Expand Barrie & Rockwell to be three section 4K-5 elementary schools
- Reorganize Purdy Elementary to be a three section 4K-5 School
- Adjust attendance boundaries
- Renovate / Expand Luther to become Middle School and District Office
- Close / sell existing middle school building
- Address category 1, 2 & 3 maintenance items at all buildings
- Renovations as needed to provide secure entry sequences at each school

SCHOOL DISTRICT OF



F O R T • A T K I N S O N

Facilities Advisory Committee

Options Review

Option 3 – New Middle School at Luther Site

- Expand Barrie & Rockwell to be three section 4K-5 elementary schools
- Reorganize Purdy Elementary to be a three section 4K-5 School
- Adjust attendance boundaries
- Replace existing Luther with a new Middle School and District Office
- Close / sell existing middle school building
- Address category 1, 2 & 3 maintenance items at all buildings
- Renovations as needed to provide secure entry sequences at each school

SCHOOL DISTRICT OF



F O R T • A T K I N S O N

Facilities Advisory Committee

Options Review

Option 4 – New Middle School at High School Site

- Potentially acquire additional land adjoining the High School
- Construct a new middle school / District Office building at the High School
- Close / sell existing middle school building
- Address category 1, 2 & 3 maintenance items at all buildings
- Renovations as needed to provide secure entry sequences at each school

SCHOOL DISTRICT OF



FORT • ATKINSON

Facilities Advisory Committee

Options Review

Option 5 – Modernize Existing Middle School

- Address identified maintenance needs
- Selectively renovate classrooms to create open collaboration spaces
- Add fire sprinkler system throughout building
- Replace finishes throughout
- Revise drop-off, parking & other site features
- Address category 1, 2 & 3 maintenance items at all buildings
- Renovations as needed to provide secure entry sequences at each school

SCHOOL DISTRICT OF



FORT • ATKINSON

Facilities Advisory Committee

Options Review

Option 6 – Consolidate & Modernize Elementary Schools

- Address identified maintenance needs
- Close Luther Elementary, combine students into Purdy Elementary
 - Combined 19/20 Enrollment: 571
 - Target Capacity of Purdy Elementary: 616
- Renovate and expand Purdy Elementary to accommodate 4 sections and collaborative learning spaces
- Renovate Rockwell and Barrie Elementary Schools to provide collaborative learning spaces
- At all three elementary schools:
 - Add fire sprinkler system throughout building
 - Replace finishes throughout
 - Revise drop-off, parking & other site features
- Renovations as needed to provide secure entry sequences at each school

SCHOOL DISTRICT OF



F O R T • A T K I N S O N

Facilities Advisory Committee

Options Review - Initial thoughts

Option 1 –
Maintenance
Only

Option 2 –
Renovate /
Expand
Luther as
Middle
School

Option 3 –
New Middle
School at
Luther Site

Option 4 –
New Middle
School at
High School
Site

Option 5 –
Modernize
Existing
Middle
School

Option 6 –
Consolidate
&
Modernize
Elementary
Schools

Option(s) ? –
Other
considerations...

SCHOOL DISTRICT OF



FORT • ATKINSON

Facilities Advisory Committee

building tour

Rockwell



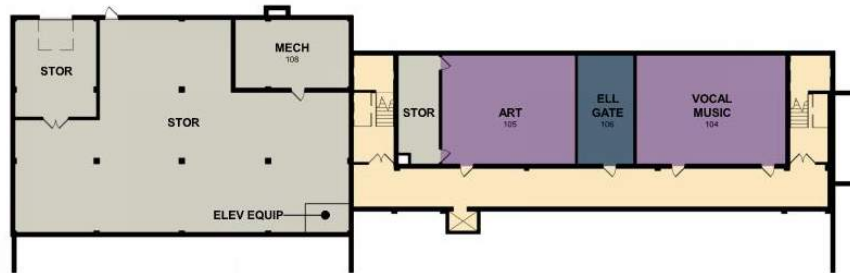
SCHOOL DISTRICT OF



FORT • ATKINSON

Rockwell Elementary

LOWER LEVEL



FIRST FLOOR



PRA Color Legend

- | | | |
|---|---|--|
| Circulation | Library/Success Center | Special Education |
| General Classrooms | Offices | Student Commons/Cafeteria |
| Gymnasium, Pool, Fitness | Service/Public Toilets | |

Facilities Advisory Committee

SCHOOL DISTRICT OF



FORT • ATKINSON

FAC Meeting No. 5 | 28 January 2020



CGSCHMIDT

pra

PLUNKETT RAYSICH
ARCHITECTS, LLP